



**RM**  
SERIES



# 220/RM-600 / 220/RM-800

Removable bollards with closed base



## Access only when needed

The **RM Series** removable bollards offer a **safe and versatile** solution for access control in **areas with infrequent transit**.

Unlike other systems, the cylinder can be **easily removed without tools**, thanks to the **ergonomic handle** and reduced weight.

Additionally, the **base plate** fully seals the opening, **ensuring safety for pedestrians and vehicles**.

- Removable cylinder with a **quick and intuitive system**
- Fast installation with **only 300mm excavation**
- **No need for electrical power**
- **Safe: handle unlocking protected** by European-standard lock (DIN 18252).

**Smart!**

**Sloped road?** The bollard follows the **inclination** for perfect integration.



## Standard configuration

The standard configuration of our systems is designed to ensure efficiency, safety and ease of management. The configuration includes:

- **Anthracite grey painted steel bollard**, a device for controlling vehicle access
- **Closed base**, an underground structure housing the cylinder.

**PILOMAT**  
**HÖRMANN**

Pilomat S.r.l.  
Via Zanica 17/P, Grassobbio (BG) Italia  
pilomat@pilomat.com [www.pilomat.com](http://www.pilomat.com)



**RM**  
SERIES



PUBLIC



COMMERCIAL

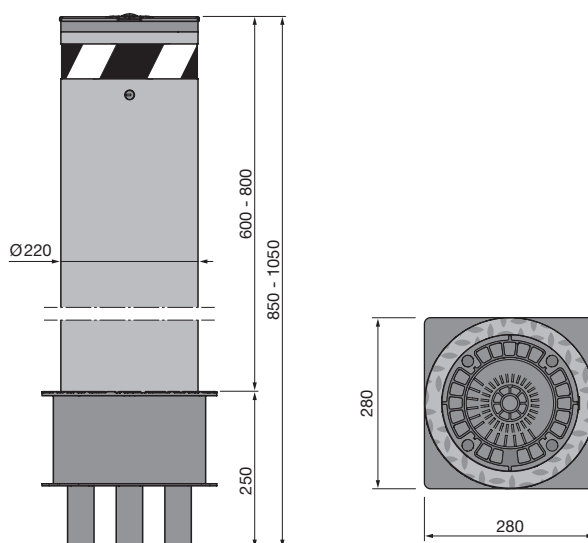
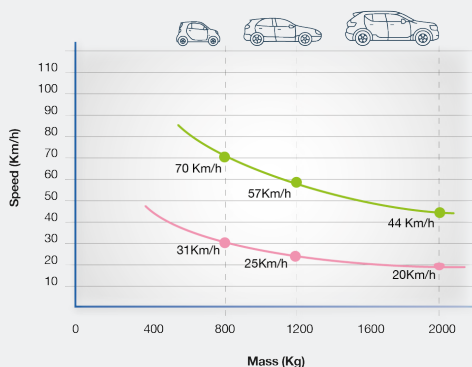


PRIVATE

# 220/RM-600 / 220/RM-800

Removable bollards with closed base

	220/RM-600	220/RM-800
Cylinder material	S235JR normal steel - X5CrNi 18-10 (AISI 304) stainless steel	
Cylinder diameter	220mm	
Cylinder height	600mm	800mm
Cylinder thickness	4mm	
Cylinder normal steel finish	Anti-corrosion treatment - grey anthracite standard painting	
Cylinder stainless steel finish	Grey anthracite standard painting or brushing	
Reflecting adhesive strip	Standard - height 55mm	
Cylinder weight (without base)	19kg	23kg
Base weight	13	
Standard lock	Euro profile cylinder lock DIN 18252	
Bollard protection rating	IP 67	
Impact resistance	30.000 J	
Breakout resistance	150.000 J	
Load class (EN124)	C250	



**PILOMAT**  
**HÖRMANN**

Pilomat S.r.l.  
Via Zanica 17/P, Grassobbio (BG) Italia  
pilomat@pilomat.com [www.pilomat.com](http://www.pilomat.com)



**RM**  
SERIES



# 220/RM-600 / 220/RM-800

Removable bollards with closed base

Pilomat offers **control and safety accessories** for every installed system: reflecting strip. Each device is designed to **ensure maximum efficiency, clear signaling, and intuitive operation.**

## Available finishes



RAL painting



Brushing



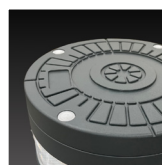
Anti-corrosion  
marine treatment

## Safety and visibility



Reflecting strip

## Special design



RAL painted  
cover



Custom  
inclination



**PILOMAT**  
**HÖRMANN**

**Pilomat S.r.l.**  
Via Zanica 17/P, Grassobbio (BG) Italia  
pilomat@pilomat.com [www.pilomat.com](http://www.pilomat.com)